



Leaf Physiology

PINEMAP 2013 Annual Meeting Field Tour
Tier III site, Taliaferro County, GA

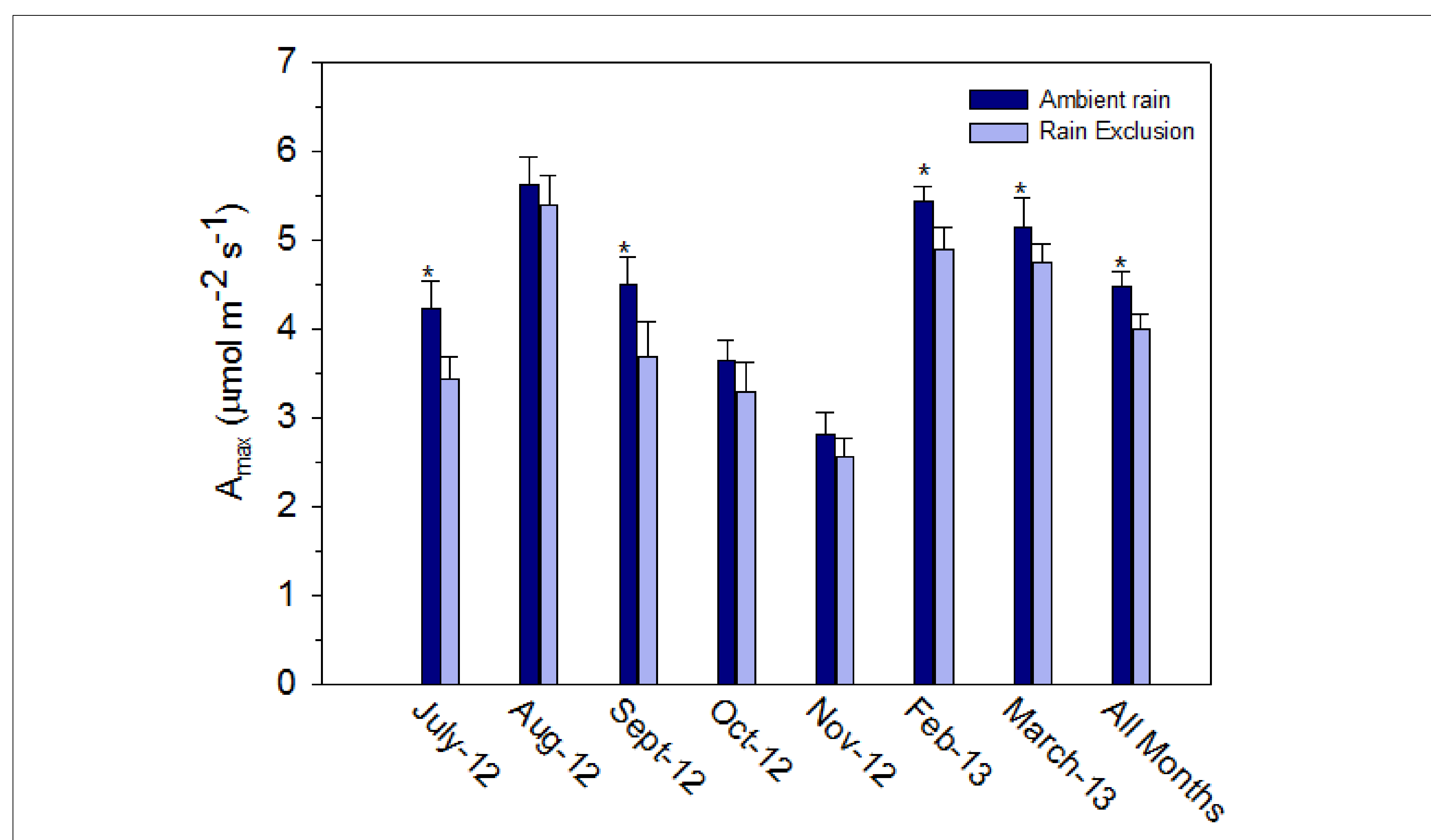


Figure 1. Light-saturated net photosynthesis (A_{max}) response to rainfall treatments. Asterisks indicate a significant difference.

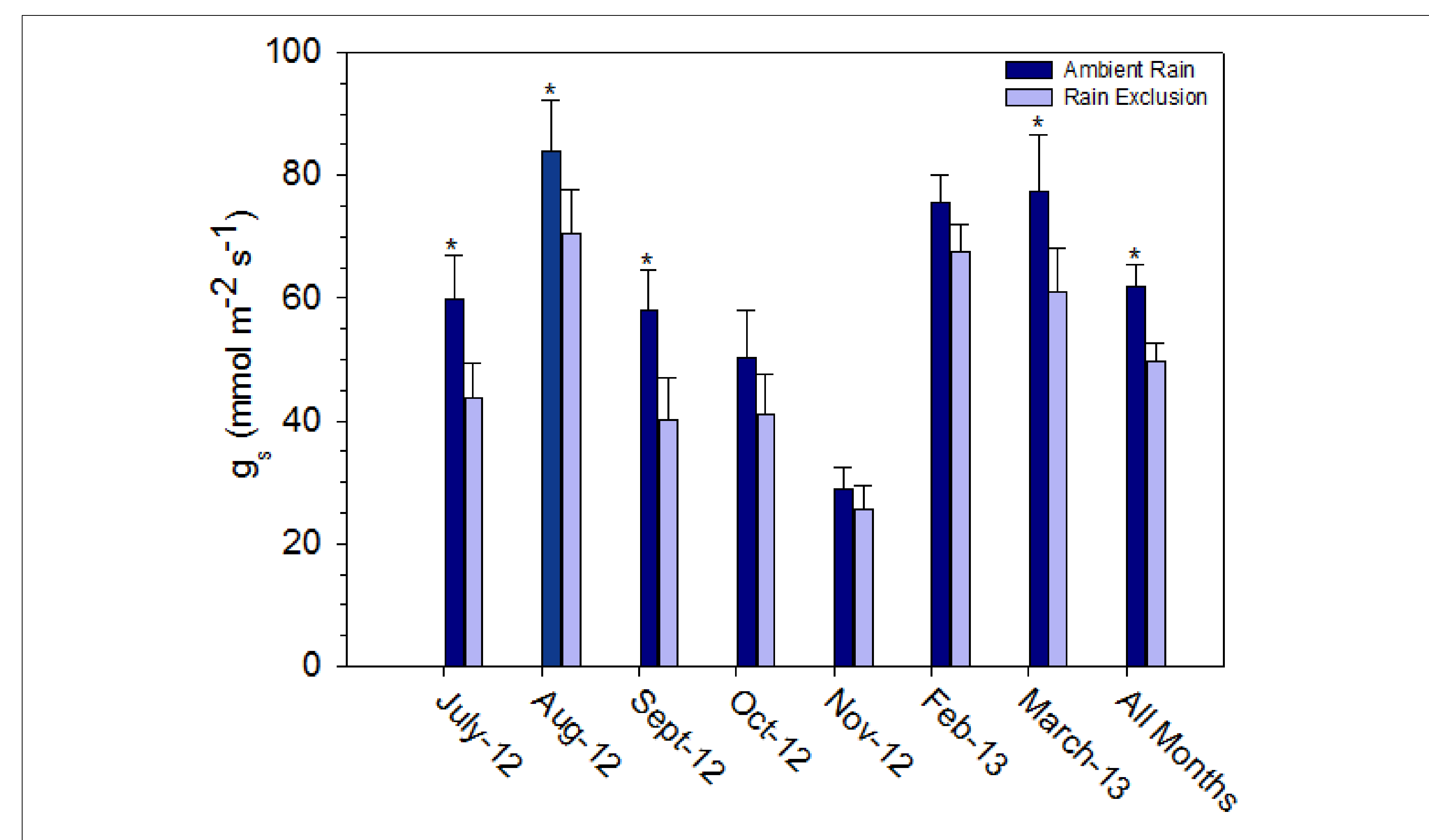


Figure 2. Stomatal conductance (g_s) in response to rainfall treatments. Asterisks indicate a significant difference.

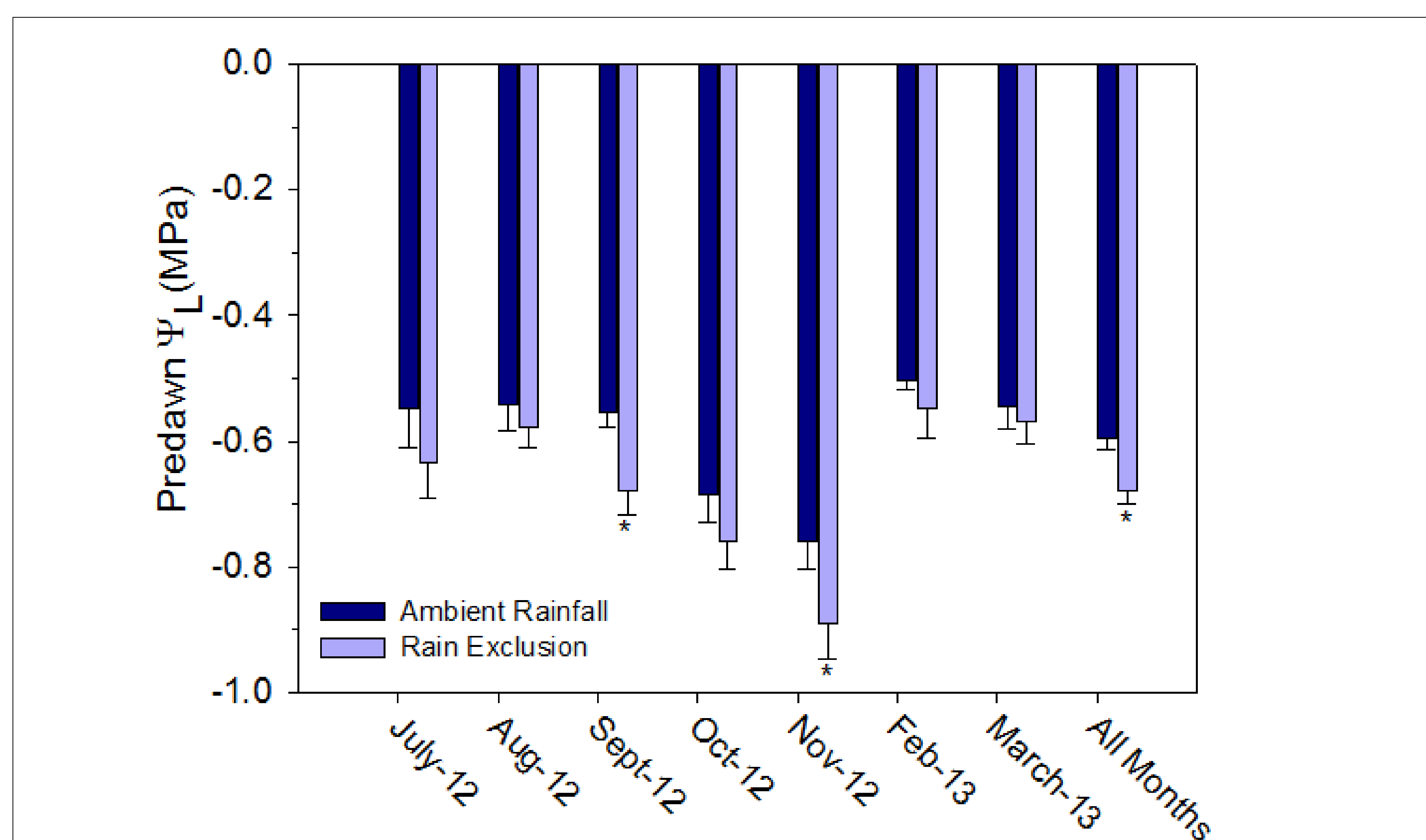


Figure 3. Predawn leaf water potential (Ψ_L) response to rainfall treatments. Asterisks indicate a significant difference.

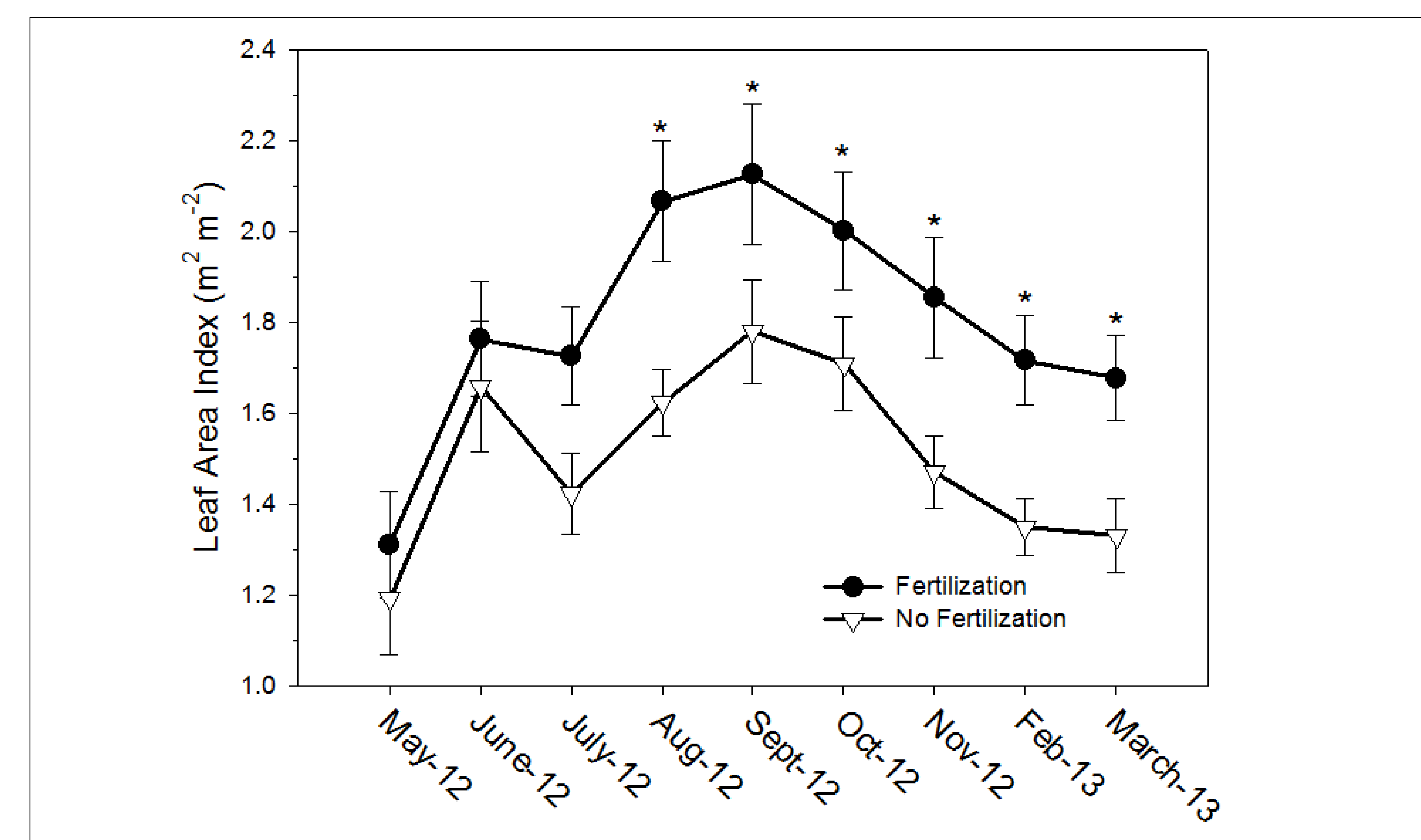


Figure 4. Response of leaf area index to fertilization treatments. Asterisks indicate a significant difference.